

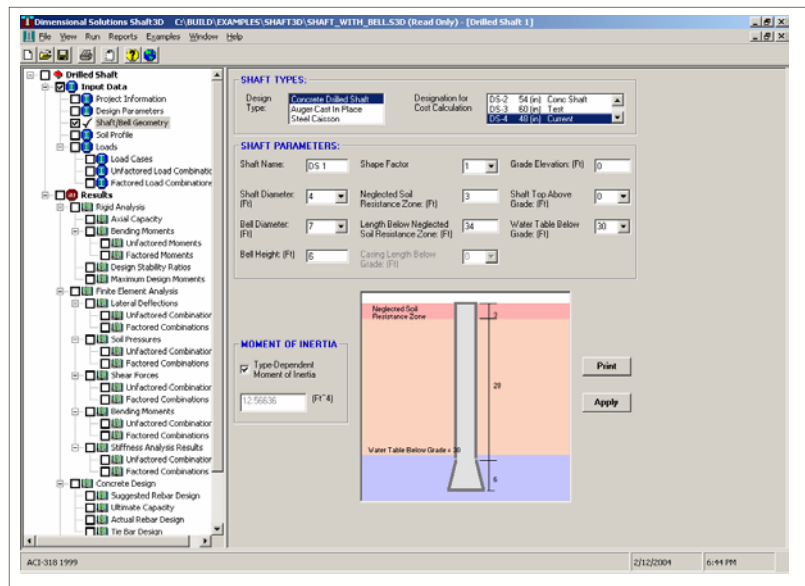
# SHAFT3D

## SHAFT DESIGN IN SECONDS

If you would like to complete foundation designs of piles or drilled shafts in seconds, you will definitely want to try Shaft3D. In an easy-to-use, windows based graphical user interface, Shaf3D will complete your shaft type foundation designs in seconds in a seamless, integrated design environment.

Some of the features of Shaft3D are:

- Completes both **geotechnical and structural analysis**, providing you with an integrated design environment to complete drilled shaft (drilled pier or caisson) design.
- Completes both **axial and lateral capacity analysis** with extensive user specified parameters so that you can meet your company or client standards.
- Provides a **graphical way to enter your soil profile** enabling you to visually see the various soil layers with its soil properties.



- Determines **pier longitudinal and tie bar configurations** in accordance with various concrete design codes for drilled shafts and auger cast-in-place piles allowing you to obtain and provide a complete design solution.
- Computes **deflections, soil pressures, shear forces and bending moments** at various depths along the length of the shaft giving you a complete view of the shaft behavior to applied loads for the specified soil conditions.
- Generates a **detailed design sketch and reports** of the completed shaft design in various formats enabling you to view the results in seconds.



Dimensional Solutions, Inc.  
(Ph): 281-497-5991  
(Fax): 281-293-9470  
Email: info@dimsoln.com

**DOWNLOAD A FREE TRIAL VERSION FROM  
WWW.DIMSOLN.COM**

To experience the increase in productivity that our customers have, download a free 30-day trial version today. Visit our web site at [www.dimsoln.com](http://www.dimsoln.com) to view additional features and functions that Shaft3D provides and to know how you and your organization can benefit from using Shaft3D for your shaft type foundation design projects.