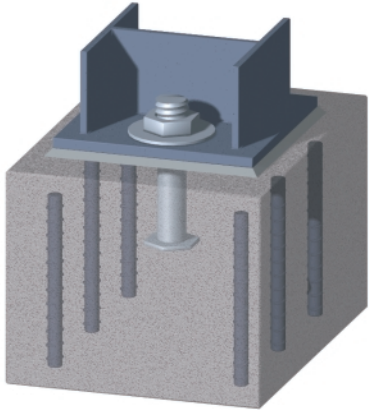


DSAnchor

Advanced software for foundation design

Dimensional Solutions, Inc.

Anchor Design Made Easy



Anchor design for anchoring equipment or structures to concrete foundations is one of the most significant components of foundation design. However, it can be a difficult and time-consuming task depending on factors such as applied loads and foundation geometry. The solution typically entails time-intensive complex calculations for determining various design parameters such as failure mode, and contribution of other foundation components towards anchorage. Some of the main features of DSAnchor are:

DSAnchor is a software solution for anchor design that simplifies your task of determining safe anchorage of equipment or structures to concrete foundations. It not only completes tedious and computation-intensive failure load and anchor group capacity calculations in just seconds, but also provides recommendations for safe anchorage.

- Use of default and customizable anchor sizes and properties
- Consideration of different types and patterns of anchors
- Checking of rebar and anchor placement conflicts
- Customization of parameters such as ductility requirements, interaction ratios
- User-specified consideration of the anchors in tension and/or shear
- Ability to specify unlimited number of load cases, unfactored and factored load combinations
- Display of various tension and shear modes of failure in a graphical form
- Recommendation of anchor selection
- Display of results in an easy-to-understand manner
- Generation of detailed hard-copy report with sketches

With its simple, easy-to-use graphical interface, DSAnchor reduces the time-intensive effort of anchor design. To experience significant timesavings and increased productivity, contact us.



Dimensional Solutions, Inc.

16010 Barkers Point Lane, Ste 500
Houston, TX 77079, USA

www.dimsoln.com

Phone: 281-497-5991

Fax: 281-293-9470

Email: info@dimsoln.com